

\$499,900 - 9621 101 Street Nw, Edmonton

MLS® #E4383383

\$499,900

1 Bedroom, 3.00 Bathroom, 1,260 sqft
Single Family on 0.08 Acres

Rossdale, Edmonton, AB

Infill lot in the desirable neighborhood of Rossdale with view of Legislature Building. Could be renovated to maintain a livable home. Has Jacuzzi and Sauna. Available for quick possession. Zoned for infills, and can accommodate a duplex or front to back 4-plex.

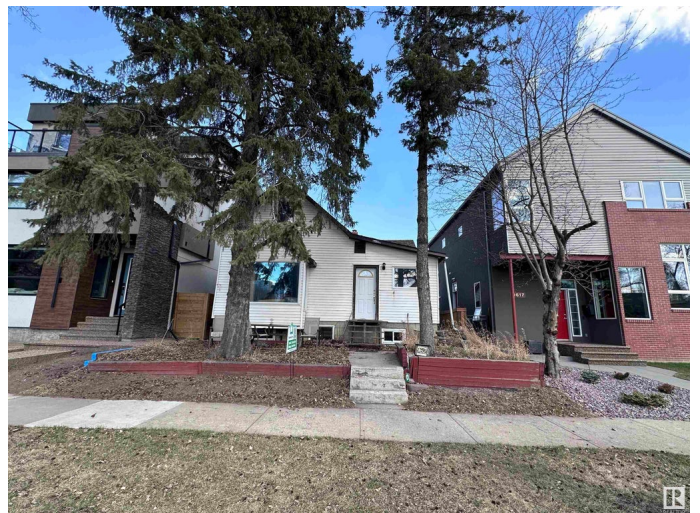
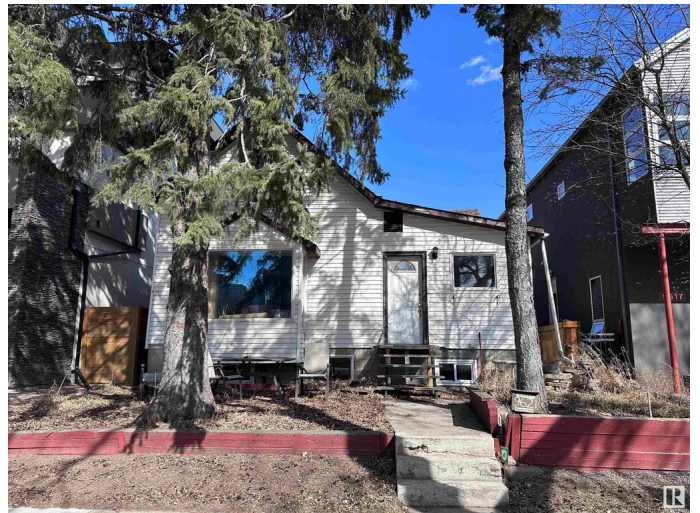
Built in 1910

Essential Information

MLS® #	E4383383
Price	\$499,900
Bedrooms	1
Bathrooms	3.00
Full Baths	3
Square Footage	1,260
Acres	0.08
Year Built	1910
Type	Single Family
Sub-Type	Residential Detached Single
Style	2 Storey

Community Information

Address	9621 101 Street Nw
Area	Edmonton
Subdivision	Rossdale
City	Edmonton
County	ALBERTA



Province AB
Postal Code T5K 0W7

Amenities

Amenities On Street
Features On Street
Parking Spaces 3
Parking Single Garage Detached
of Garages 1

Interior

Interior Laminate Flooring, Ceramic Tile, Hardwood
Interior Features None
Heating Forced Air-1
of Stories 3
Has Basement Yes
Basement Fully Finished, Full

Exterior

Exterior Vinyl, Cedar
Exterior Features Back Lane, Level Land, Paved Lane, Playground Nearby, Schools, Shopping Nearby, Environmental Reserve, Fenced, Flat Site, Private Setting, Ski Hill
Construction Wood Frame

Additional Information

Date Listed April 21st, 2024

DATA IS DEEMED RELIABLE BUT IS NOT GUARANTEED ACCURATE BY THE REALTORS® ASSOCIATION OF EDMONTON. COPYRIGHT 2024 BY THE REALTORS® ASSOCIATION OF EDMONTON. ALL RIGHTS RESERVED. Trademarks are owned or controlled by the Canadian Real Estate Association (CREA) and identify real estate professionals who are members of CREA (REALTOR®, REALTORS®) and/or the quality of services they provide (MLS®, Multiple Listing Service®)

Listing information last updated on October 31st, 2024 at 5:31pm MDT