

## \$309,900 - 57 2005 70 Street, Edmonton

MLS® #E4427534

**\$309,900**

2 Bedroom, 1.50 Bathroom, 1,137 sqft

Condo / Townhouse on 0.00 Acres

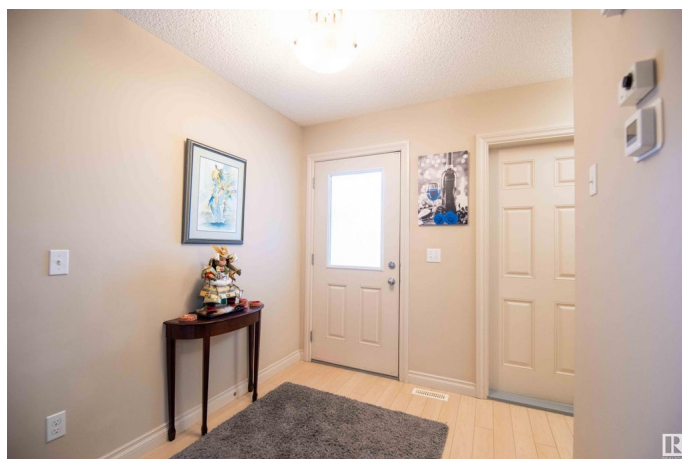
Summerside, Edmonton, AB

Welcome to this well-maintained 2 storey townhome with a single attached garage & low condo fees! Located in the desirable community of Summerside, this TWO bedroom townhouse has been immaculately maintained! Open concept main floor plan with laminate flooring throughout. Living room has large south facing windows with tons of natural light. The spacious U-shaped kitchen features stainless steel appliances, tons of cabinets & counter space. The dining area has a patio door leading to the private deck that backs onto a green space with a fabulous view in the summer. Upstairs has TWO good sized bedrooms with walk-in closets, a 4pc full bathroom and laundry room. Open basement has a big window & plumbing R/I for a bathroom. Conveniently located near restaurants, shopping center, schools, playgrounds and surrounded by amazing walking trails! Easy access to Anthony Henday Drive, Ellerslie Rd, and YEG airport.

Built in 2011

### Essential Information

MLS® #	E4427534
Price	\$309,900
Bedrooms	2
Bathrooms	1.50



Full Baths	1
Half Baths	1
Square Footage	1,137
Acres	0.00
Year Built	2011
Type	Condo / Townhouse
Sub-Type	Townhouse
Style	2 Storey
Status	Active

### Community Information

Address	57 2005 70 Street
Area	Edmonton
Subdivision	Summerside
City	Edmonton
County	ALBERTA
Province	AB
Postal Code	T6X 0T9

### Amenities

Amenities	Deck, Detectors Smoke, Hot Water Natural Gas, Parking-Visitor, Vinyl Windows
Parking	Single Garage Attached

### Interior

Appliances	Dishwasher-Built-In, Dryer, Garage Control, Garage Opener, Microwave Hood Fan, Refrigerator, Stove-Electric, Washer, Window Coverings
Heating	Forced Air-1, Natural Gas
Stories	2
Has Basement	Yes
Basement	Full, Unfinished

### Exterior

Exterior	Wood, Vinyl
Exterior Features	Flat Site, Landscaped, Playground Nearby, Public Transportation, Schools, Shopping Nearby
Roof	Asphalt Shingles
Construction	Wood, Vinyl
Foundation	Slab

**School Information**

Elementary	Michael Strembitsky School
Middle	Michael Strembitsky School
High	J. Percy Page School

**Additional Information**

Date Listed	March 26th, 2025
Days on Market	38
Zoning	Zone 53
Condo Fee	\$304

DATA IS DEEMED RELIABLE BUT IS NOT GUARANTEED ACCURATE BY THE REALTORS® ASSOCIATION OF EDMONTON. COPYRIGHT 2025 BY THE REALTORS® ASSOCIATION OF EDMONTON. ALL RIGHTS RESERVED.Trademarks are owned or controlled by the Canadian Real Estate Association (CREA) and identify real estate professionals who are members of CREA (REALTOR®, REALTORS®) and/or the quality of services they provide (MLS®, Multiple Listing Service®)

Listing information last updated on May 3rd, 2025 at 6:47pm MDT