

# **\$548,701 - 12930 160a Avenue, Edmonton**

MLS® #E4428751

**\$548,701**

4 Bedroom, 3.00 Bathroom, 1,386 sqft

Single Family on 0.00 Acres

Oxford, Edmonton, AB

**BACK AVAILABLE! Deal collapsed on financing. Looking for a spacious family home in Carlton/Oxford under \$550K? This stunning bi-level offers everything you need and more, Rent to Own option may be considered!** Freshly painted throughout with brand-new LVP flooring, sleek ceramic tile, and modern countertops, this home is ready for you to move right in. The fully finished basement adds extra living space, while the double attached garage provides convenience and storage. With 4 bedrooms and 3 bathrooms, including a primary suite with a walk-in closet and a full en-suite, this home is designed for comfort. The open-plan layout and vaulted ceilings create a bright and airy atmosphere, perfect for family gatherings. Plus, all appliances are included, and the fully fenced yard is ideal for outdoor fun. Situated on a quiet street with easy access to transit, shopping, and more, this home is the perfect blend of style, space, and location for your growing family!

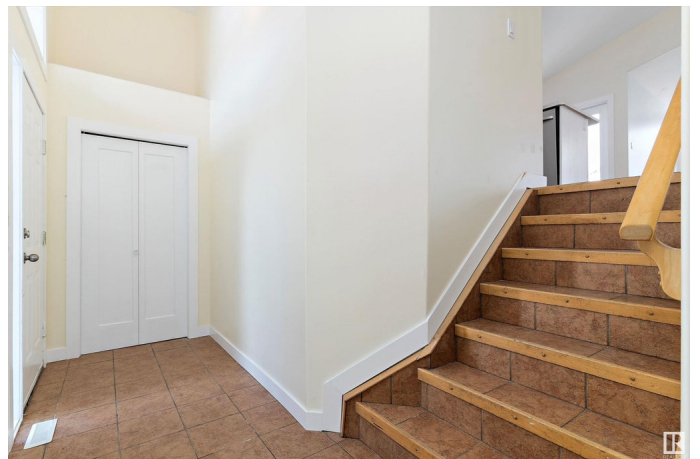
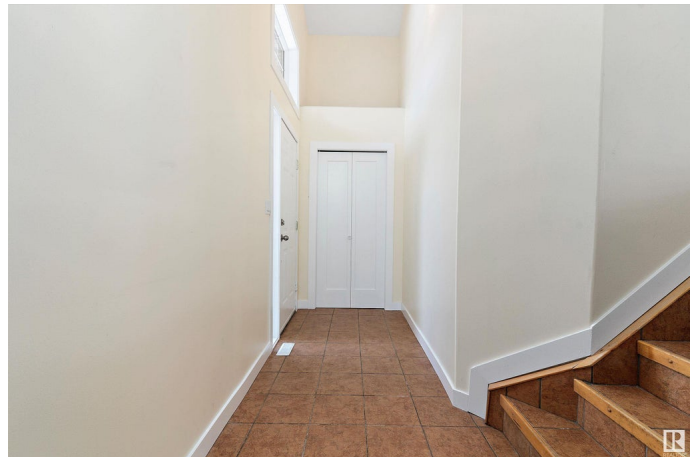
Built in 2002

## **Essential Information**

MLS® # E4428751

Price \$548,701

Bedrooms 4



Bathrooms	3.00
Full Baths	3
Square Footage	1,386
Acres	0.00
Year Built	2002
Type	Single Family
Sub-Type	Detached Single Family
Style	Bi-Level
Status	Active

### Community Information

Address	12930 160a Avenue
Area	Edmonton
Subdivision	Oxford
City	Edmonton
County	ALBERTA
Province	AB
Postal Code	T6V 1R3

### Amenities

Amenities	See Remarks
Parking Spaces	4
Parking	Double Garage Attached

### Interior

Interior Features	ensuite bathroom
Appliances	Dishwasher-Built-In, Dryer, Fan-Ceiling, Microwave Hood Fan, Refrigerator, Stove-Electric, Washer
Heating	Forced Air-1, Natural Gas
Fireplaces	Mantel
Stories	2
Has Basement	Yes
Basement	Full, Finished

### Exterior

Exterior	Wood, Brick, Vinyl
Exterior Features	See Remarks
Roof	Asphalt Shingles
Construction	Wood, Brick, Vinyl

Foundation                      Concrete Perimeter

**Additional Information**

Date Listed                      April 3rd, 2025

Days on Market                30

Zoning                            Zone 27

DATA IS DEEMED RELIABLE BUT IS NOT GUARANTEED ACCURATE BY THE REALTORS® ASSOCIATION OF EDMONTON. COPYRIGHT 2025 BY THE REALTORS® ASSOCIATION OF EDMONTON. ALL RIGHTS RESERVED.Trademarks are owned or controlled by the Canadian Real Estate Association (CREA) and identify real estate professionals who are members of CREA (REALTOR®, REALTORS®) and/or the quality of services they provide (MLS®, Multiple Listing Service®)

Listing information last updated on May 3rd, 2025 at 9:17pm MDT