

\$619,900 - 6414 28 Avenue, Edmonton

MLS® #E4429811

\$619,900

3 Bedroom, 2.50 Bathroom, 2,235 sqft

Single Family on 0.00 Acres

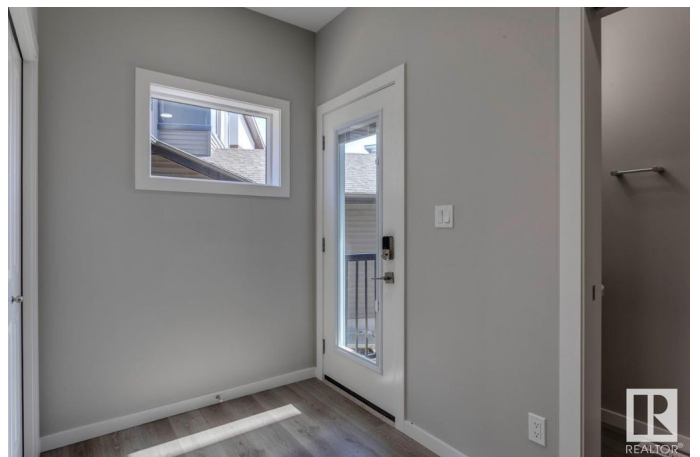
Mattson, Edmonton, AB

A stunning open-to-below home! Located on a regular 24' lot. Built with a flex room on the main floor, spacious living room, dinette, and L-shaped kitchen at the back with a corner pantry, and 41" soft close upper cabinets. The entire house was widened by 2 ft! Every Bedrock Home comes complete with a modern smart home technology system (Smart Home Hub), Ecobee thermostat, Lorex video doorbell & Weiser Halo Wi-Fi Smart keyless lock with touch screen. Spindle railing on the stairs and upper hall to create an open feel from main floor to upper level. Side entry is added for future development, the basement ceilings are upgraded to 9'. Built with a 5-piece ensuite with upgraded walk-in shower, dual sinks and a soaker tub! Extra windows were added on both sides of the house. Double compartment stainless steel under mount kitchen sink, complete with a chrome finish faucet with pull down sprayer, and 1.5gpm aerator. Cozy up by 50" Linear Ortech LED electric fireplace.

Built in 2025

Essential Information

MLS® #	E4429811
Price	\$619,900
Bedrooms	3
Bathrooms	2.50



Full Baths	2
Half Baths	1
Square Footage	2,235
Acres	0.00
Year Built	2025
Type	Single Family
Sub-Type	Detached Single Family
Style	2 Storey
Status	Active

Community Information

Address	6414 28 Avenue
Area	Edmonton
Subdivision	Mattson
City	Edmonton
County	ALBERTA
Province	AB
Postal Code	T6X 1A3

Amenities

Amenities	No Animal Home, No Smoking Home
Parking Spaces	4
Parking	Double Garage Attached

Interior

Interior Features	ensuite bathroom
Appliances	None, See Remarks
Heating	Forced Air-1, Natural Gas
Fireplace	Yes
Fireplaces	Insert
Stories	2
Has Basement	Yes
Basement	Full, Unfinished

Exterior

Exterior	Wood, Vinyl
Exterior Features	Park/Reserve, Playground Nearby, Schools, Shopping Nearby
Roof	Asphalt Shingles
Construction	Wood, Vinyl

Foundation Concrete Perimeter

Additional Information

Date Listed April 9th, 2025

Days on Market 24

Zoning Zone 53

DATA IS DEEMED RELIABLE BUT IS NOT GUARANTEED ACCURATE BY THE REALTORS® ASSOCIATION OF EDMONTON. COPYRIGHT 2025 BY THE REALTORS® ASSOCIATION OF EDMONTON. ALL RIGHTS RESERVED.Trademarks are owned or controlled by the Canadian Real Estate Association (CREA) and identify real estate professionals who are members of CREA (REALTOR®, REALTORS®) and/or the quality of services they provide (MLS®, Multiple Listing Service®)

Listing information last updated on May 3rd, 2025 at 5:02am MDT