

## \$789,900 - 5 Aspenglen Cove, Spruce Grove

MLS® #E4432415

**\$789,900**

3 Bedroom, 2.50 Bathroom, 1,713 sqft

Single Family on 0.00 Acres

Jesperdale, Spruce Grove, AB

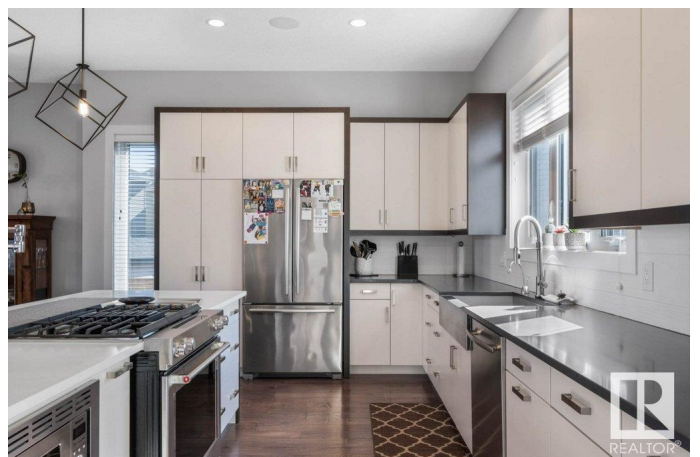
STUNNING 1712 sq ft custom built bungalow! This home is LOADED with UPGRADES! Enter with loads of natural light coming in through expansive patio doors & windows! The kitchen features quartz countertops, chef graded SS appliances with gas stove & custom cabinetry & pantry. The great rm features built-ins, gas F/P & gleaming hardwood & is open to the dining. The primary suite is simply beautiful! With deck access, gorgeous 5 pc ensuite, his & hers W/I closets itâ€™s & in-floor heat! The main level is completed with den, 2 pc bath & mudroom area with separate laundry, with sink & more cabinetry. The basement is made for entertaining! Wide open rec rm(with exposed steel truss), feature wall with electric F/P, 5.1 surround sound, games area & WET BAR WITH CUSTOM ENCLOSED WINE WALL! There are 2 bedrooms & 4 pc bath & heated floor. The heated O/S garage is 22X23.5 with floor drain & H/C taps. Beautifully landscaped with composite deck, shed, gutter guards, permanent lights & pie lot. AC, 12 ceilings & MUCH MORE!

Built in 2014

### Essential Information

MLS® # E4432415

Price \$789,900



|                |                        |
|----------------|------------------------|
| Bedrooms       | 3                      |
| Bathrooms      | 2.50                   |
| Full Baths     | 2                      |
| Half Baths     | 1                      |
| Square Footage | 1,713                  |
| Acres          | 0.00                   |
| Year Built     | 2014                   |
| Type           | Single Family          |
| Sub-Type       | Detached Single Family |
| Style          | Bungalow               |
| Status         | Active                 |

### Community Information

|             |                  |
|-------------|------------------|
| Address     | 5 Aspenglen Cove |
| Area        | Spruce Grove     |
| Subdivision | Jesperdale       |
| City        | Spruce Grove     |
| County      | ALBERTA          |
| Province    | AB               |
| Postal Code | T7X 0J3          |

### Amenities

|           |   |
|-----------|---|
| Amenities | Air Conditioner, Bar, Ceiling 10 ft., Deck, Hot Water Instant, No Smoking Home, Patio, Vinyl Windows, See Remarks |
| Parking   | Double Garage Attached, Heated, Over Sized  |

### Interior

|                   |  |
|-------------------|--|
| Interior Features | ensuite bathroom   |
| Appliances        | Air Conditioning-Central, Dishwasher-Built-In, Dryer, Garage Control, Garage Opener, Oven-Microwave, Refrigerator, Storage Shed, Stove-Gas, Washer, Water Softener, Window Coverings, See Remarks, Garage Heater |
| Heating           | Forced Air-1, In Floor Heat System, Natural Gas  |
| Fireplace         | Yes  |
| Fireplaces        | See Remarks  |
| Stories           | 2  |
| Has Basement      | Yes  |
| Basement          | Full, Finished   |

### Exterior

|                   |   |
|-------------------|---|
| Exterior          | Wood, Stone, Vinyl  |
| Exterior Features | Cul-De-Sac, Golf Nearby, Landscaped, No Through Road, Playground Nearby, Schools, Shopping Nearby |
| Roof              | Asphalt Shingles  |
| Construction      | Wood, Stone, Vinyl  |
| Foundation        | Concrete Perimeter  |

**Additional Information**

|                |                  |
|----------------|------------------|
| Date Listed    | April 24th, 2025 |
| Days on Market | 9                |
| Zoning         | Zone 91          |

DATA IS DEEMED RELIABLE BUT IS NOT GUARANTEED ACCURATE BY THE REALTORS® ASSOCIATION OF EDMONTON. COPYRIGHT 2025 BY THE REALTORS® ASSOCIATION OF EDMONTON. ALL RIGHTS RESERVED.Trademarks are owned or controlled by the Canadian Real Estate Association (CREA) and identify real estate professionals who are members of CREA (REALTOR®, REALTORS®) and/or the quality of services they provide (MLS®, Multiple Listing Service®)

Listing information last updated on May 3rd, 2025 at 3:32am MDT