

## \$564,900 - 1116 111a Street, Edmonton

MLS® #E4432626

**\$564,900**

5 Bedroom, 3.00 Bathroom, 1,555 sqft

Single Family on 0.00 Acres

Twin Brooks, Edmonton, AB

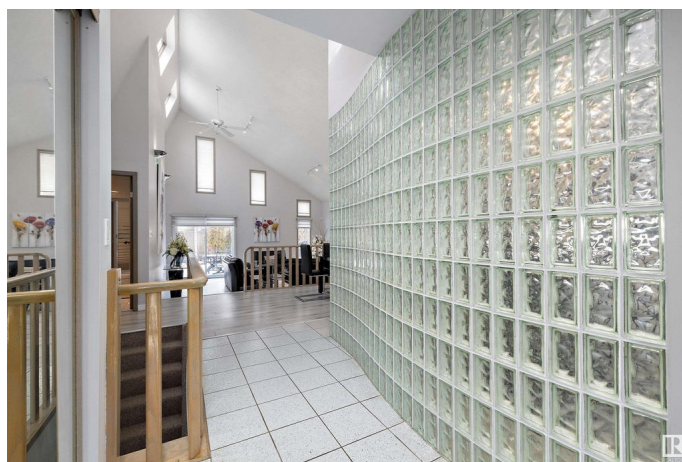
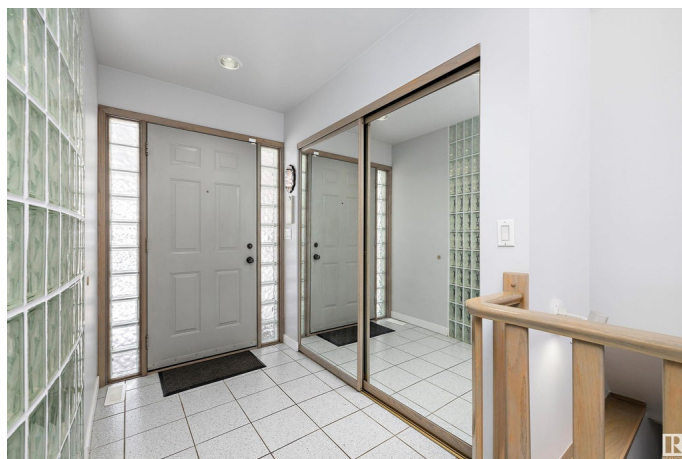
This stunning bungalow in the sought-after Twin Brooks neighbourhood boasts 2,883 sq ft of living space, with 5-bedrooms & 3-bathrooms. Entering this one-of-a-kind home you are greeted by a feature glass-block wall, and an abundance of light from the multiple windows that surround the kitchen & living room with its vaulted ceiling. The spacious kitchen features sleek quartz countertops, and built-in island seating, ideal for both cooking and entertaining. The master bedroom offers a walk-in closet, fabulous ensuite w/ large soaker tub & separate shower, and direct access to the backyard. The fully finished basement offers 2 large bedrooms, a 3-piece bath, and expansive family room complete with a wet-bar. Enjoy the spacious backyard with large deck, mature trees, fire pit, and a tranquil water feature - your own private retreat. Recent upgrades include a new air conditioner, furnace, and water heater for added peace of mind. A perfect home for families or those who love to host. Don't miss out!

Built in 1989

### Essential Information

MLS® # E4432626

Price \$564,900



Bedrooms	5
Bathrooms	3.00
Full Baths	3
Square Footage	1,555
Acres	0.00
Year Built	1989
Type	Single Family
Sub-Type	Detached Single Family
Style	Bungalow
Status	Active

### Community Information

Address	1116 111a Street
Area	Edmonton
Subdivision	Twin Brooks
City	Edmonton
County	ALBERTA
Province	AB
Postal Code	T6J 6R9

### Amenities

Amenities	Air Conditioner, Deck, Fire Pit, Vaulted Ceiling
Parking	Double Garage Attached

### Interior

Interior Features	ensuite bathroom
Appliances	Dishwasher-Built-In, Dryer, Fan-Ceiling, Garage Control, Garage Opener, Oven-Microwave, Refrigerator, Stove-Electric, Vacuum System Attachments, Vacuum Systems, Washer, Window Coverings
Heating	Forced Air-1, Natural Gas
Fireplace	Yes
Fireplaces	Glass Door
Stories	2
Has Basement	Yes
Basement	Full, Finished

### Exterior

Exterior	Wood, Vinyl
Exterior Features	Cul-De-Sac, Fenced, Golf Nearby, Landscaped, No Back Lane, No

Through Road, Playground Nearby, Public Swimming Pool, Public Transportation, Schools, Shopping Nearby

Roof	Asphalt Shingles
Construction	Wood, Vinyl
Foundation	Concrete Perimeter

### School Information

Elementary	G.P. Nicholson, St Teresa
Middle	DS Mackenzie, Louis St L
High	Harry Ainlay, LSL

### Additional Information

Date Listed	April 24th, 2025
Days on Market	7
Zoning	Zone 16

DATA IS DEEMED RELIABLE BUT IS NOT GUARANTEED ACCURATE BY THE REALTORS® ASSOCIATION OF EDMONTON. COPYRIGHT 2025 BY THE REALTORS® ASSOCIATION OF EDMONTON. ALL RIGHTS RESERVED.Trademarks are owned or controlled by the Canadian Real Estate Association (CREA) and identify real estate professionals who are members of CREA (REALTOR®, REALTORS®) and/or the quality of services they provide (MLS®, Multiple Listing Service®)

Listing information last updated on May 1st, 2025 at 1:47pm MDT