

\$449,000 - 17211 107 Street, Edmonton

MLS® #E4433769

\$449,000

5 Bedroom, 2.00 Bathroom, 1,223 sqft

Single Family on 0.00 Acres

Baturyn, Edmonton, AB

Just steps from a school, situated on a large lot, and perfectly appointed with 5 total bedrooms, this beautiful Baturyn bilevel with over 2,000 total sqr ft is move in ready and waiting for you and your family to enjoy! Thoughtfully upgraded to include central a/c, newer shingles, vinyl windows, and newer flooring... just to name a few. You'll feel welcomed into this home from the start thanks to the natural flow and large windows throughout the upper floor. The kitchen has been renovated to include granite countertops and stainless steel appliances including a gas stove! Off the dining is double doors leading out to the two tiered deck, spacious backyard, and double detached garage. The main floor of the home has 3 bedrooms plus a renovated and modern full bathroom. In the basement (complete w/ separate entrance from the back) the high ceilings and large windows allow you to enjoy the two large bedrooms, rec room, additional full bathroom and laundry. The perfect family home awaits!

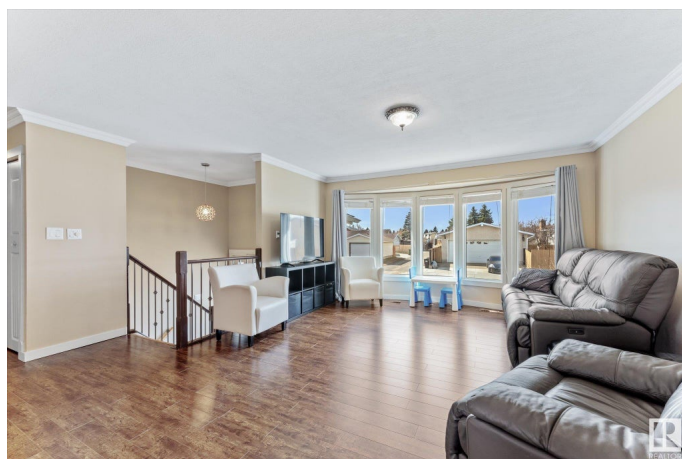
Built in 1977

Essential Information

MLS® # E4433769

Price \$449,000

Bedrooms 5



Bathrooms	2.00
Full Baths	2
Square Footage	1,223
Acres	0.00
Year Built	1977
Type	Single Family
Sub-Type	Detached Single Family
Style	Bi-Level
Status	Active

Community Information

Address	17211 107 Street
Area	Edmonton
Subdivision	Baturyn
City	Edmonton
County	ALBERTA
Province	AB
Postal Code	T5X 3H5

Amenities

Amenities	On Street Parking, Air Conditioner, Deck, Detectors Smoke, No Smoking Home, See Remarks
Parking	Double Garage Detached, Over Sized

Interior

Appliances	Air Conditioning-Central, Dryer, Garage Opener, Microwave Hood Fan, Refrigerator, Stove-Gas, Washer
Heating	Forced Air-1, Natural Gas
Stories	2
Has Basement	Yes
Basement	Full, Finished

Exterior

Exterior	Wood, Vinyl
Exterior Features	Fenced, Landscaped, Playground Nearby, Public Transportation, Schools, Shopping Nearby
Roof	Asphalt Shingles
Construction	Wood, Vinyl
Foundation	Concrete Perimeter

Additional Information

Date Listed May 1st, 2025
Days on Market 1
Zoning Zone 27

DATA IS DEEMED RELIABLE BUT IS NOT GUARANTEED ACCURATE BY THE REALTORS® ASSOCIATION OF EDMONTON. COPYRIGHT 2025 BY THE REALTORS® ASSOCIATION OF EDMONTON. ALL RIGHTS RESERVED.Trademarks are owned or controlled by the Canadian Real Estate Association (CREA) and identify real estate professionals who are members of CREA (REALTOR®, REALTORS®) and/or the quality of services they provide (MLS®, Multiple Listing Service®)
Listing information last updated on May 2nd, 2025 at 6:02pm MDT