

# \$484,999 - 1439 Goodspeed Lane, Edmonton

MLS® #E4434222

**\$484,999**

3 Bedroom, 2.50 Bathroom, 1,650 sqft

Single Family on 0.00 Acres

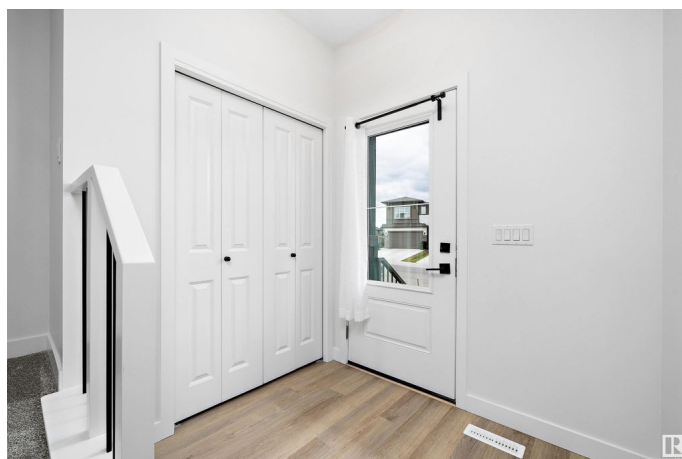
Glastonbury, Edmonton, AB

Location! Location! Location! Built by Brookfield, this beautifully maintained, brand-new home offers the perfect blend of luxury and value. Step into a lavish living space with main floor featuring a bright and elegant layout, highlighted by huge windows that flood the space with natural light. The chef's kitchen is a showstopper with upgraded cabinetry—ideal for hosting and daily living. The dining area and expansive living room boast a sleek linear fireplace for added warmth and style. The main floor also includes a family room and a stylish half bath. Upstairs, you'll find 3 generously sized bedrooms with oversized windows, 2 full bathrooms including a stunning ensuite, and a convenient upper-floor laundry. Every inch of this home has been upgraded and every corner has been architecturally designed in an amazing and thoughtful way to maximize beauty and functionality.

Built in 2023

## Essential Information

MLS® #	E4434222
Price	\$484,999
Bedrooms	3
Bathrooms	2.50
Full Baths	2



Half Baths	1
Square Footage	1,650
Acres	0.00
Year Built	2023
Type	Single Family
Sub-Type	Detached Single Family
Style	2 Storey
Status	Active

### Community Information

Address	1439 Goodspeed Lane
Area	Edmonton
Subdivision	Glastonbury
City	Edmonton
County	ALBERTA
Province	AB
Postal Code	T5T 0W2

### Amenities

Amenities	No Animal Home, No Smoking Home
Parking	Parking Pad Cement/Paved

### Interior

Interior Features	ensuite bathroom
Appliances	Dishwasher-Built-In, Dryer, Oven-Microwave, Refrigerator, Stove-Electric, Washer
Heating	Forced Air-1, Natural Gas
Fireplace	Yes
Fireplaces	Glass Door
Stories	2
Has Basement	Yes
Basement	Full, Unfinished

### Exterior

Exterior	Wood, Stone, Vinyl
Exterior Features	Airport Nearby, Playground Nearby, Public Transportation, Schools, Shopping Nearby
Roof	Asphalt Shingles
Construction	Wood, Stone, Vinyl

Foundation                      Concrete Perimeter

**Additional Information**

Date Listed                      May 2nd, 2025  
Days on Market                92  
Zoning                              Zone 58  
HOA Fees                         183.75  
HOA Fees Freq.                Annually

DATA IS DEEMED RELIABLE BUT IS NOT GUARANTEED ACCURATE BY THE REALTORS® ASSOCIATION OF EDMONTON. COPYRIGHT 2025 BY THE REALTORS® ASSOCIATION OF EDMONTON. ALL RIGHTS RESERVED.Trademarks are owned or controlled by the Canadian Real Estate Association (CREA) and identify real estate professionals who are members of CREA (REALTOR®, REALTORS®) and/or the quality of services they provide (MLS®, Multiple Listing Service®)  
Listing information last updated on August 2nd, 2025 at 7:02am MDT