

\$75,000 - N/A, Edmonton

MLS® #E4435566

\$75,000

1 Bedroom, 1.00 Bathroom, 533 sqft

Condo / Townhouse on 0.00 Acres

Belvedere, Edmonton, AB

A great starter home. Spacious one bedroom walking distance to LRT , on bus route. Easy access to Downtown, University of Alberta, Anthony Henday, Yellowhead. new paint, builtin dishwasher, beautiful ceramic flooring, laminate flooring , hugh west facing balcony. walking distance to Elementary school. well managed building with low condo fee. A truly value packed starter home.

Built in 1983

Essential Information

| | |
|----------------|------------------------|
| MLS® # | E4435566 |
| Price | \$75,000 |
| Bedrooms | 1 |
| Bathrooms | 1.00 |
| Full Baths | 1 |
| Square Footage | 533 |
| Acres | 0.00 |
| Year Built | 1983 |
| Type | Condo / Townhouse |
| Sub-Type | Apartment High Rise |
| Style | Single Level Apartment |
| Status | Active |

Community Information

| | |
|---------|----------|
| Address | N/A |
| Area | Edmonton |



| | |
|-------------|-----------|
| Subdivision | Belvedere |
| City | Edmonton |
| County | ALBERTA |
| Province | AB |
| Postal Code | T5C 0A4 |

Amenities

| | |
|-----------|-------------|
| Amenities | Intercom |
| Parking | See Remarks |

Interior

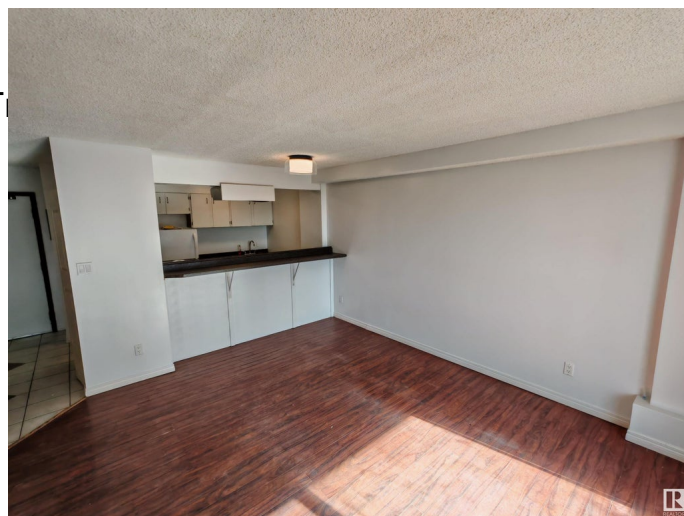
| | |
|--------------|------------------------------|
| Appliances | Dishwasher-Built-In, Hood Fa |
| Heating | Baseboard, Natural Gas |
| # of Stories | 8 |
| Stories | 1 |
| Has Basement | Yes |
| Basement | None, No Basement |

Exterior

| | |
|-------------------|-----------------------------|
| Exterior | Concrete, Brick |
| Exterior Features | Playground Nearby, Public T |
| Roof | Tar & Gravel |
| Construction | Concrete, Brick |
| Foundation | Concrete Perimeter |

Additional Information

| | |
|----------------|---------------|
| Date Listed | May 9th, 2025 |
| Days on Market | 38 |
| Zoning | Zone 02 |
| Condo Fee | \$359 |



DATA IS DEEMED RELIABLE BUT IS NOT GUARANTEED ACCURATE BY THE REALTORS® ASSOCIATION OF EDMONTON. COPYRIGHT 2025 BY THE REALTORS® ASSOCIATION OF EDMONTON. ALL RIGHTS RESERVED. Trademarks are owned or controlled by the Canadian Real Estate Association (CREA) and identify real estate professionals who are members of CREA (REALTOR®, REALTORS®) and/or the quality of services they provide (MLS®, Multiple Listing Service®)

Listing information last updated on June 16th, 2025 at 12:17pm MDT