

# \$299,900 - 9 4630 17 Avenue, Edmonton

MLS® #E4437643

**\$299,900**

2 Bedroom, 1.50 Bathroom, 1,024 sqft  
Condo / Townhouse on 0.00 Acres

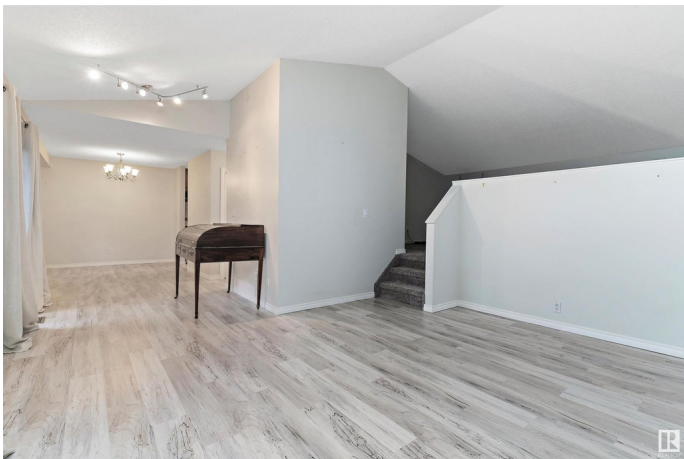
Pollard Meadows, Edmonton, AB

BEAUTIFULLY UPGRADED half duplex with a DOUBLE ATTACHED GARAGE in the highly sought-after Carrington Spa Complex (Pollard Meadows)! The upper level boasts a spacious living room, a separate dining area with patio access, & a FULLY RENOVATED KITCHEN, FEATURING NEW COUNTERTOPS, SS APPLIANCES, & FLOORING (2023). A versatile loft, currently used as the primary bedroom, along with a 2-pc bath, completes this level. The FULLY FINISHED BASEMENT offers two generously sized bedrooms and a 4-pc bath. EXTENSIVE UPDATES INCLUDE a NEW FURNACE, HOT WATER TANK, VINYL PLANK FLOORING, & NEW CARPET (2023), PLUS A GARAGE CONTROLLER (2024). Ideally situated close to schools and all amenities!

Built in 1989

## Essential Information

MLS® #	E4437643
Price	\$299,900
Bedrooms	2
Bathrooms	1.50
Full Baths	1
Half Baths	1
Square Footage	1,024
Acres	0.00



Year Built	1989
Type	Condo / Townhouse
Sub-Type	Half Duplex
Style	Bi-Level
Status	Active

### Community Information

Address	9 4630 17 Avenue
Area	Edmonton
Subdivision	Pollard Meadows
City	Edmonton
County	ALBERTA
Province	AB
Postal Code	T6L 6H3

### Amenities

Amenities	Deck, Detectors Smoke, Exterior Walls- 2"x6", Tennis Courts, Vinyl Windows
Parking	Double Garage Attached

### Interior

Appliances	Dishwasher-Built-In, Dryer, Garage Control, Garage Opener, Microwave Hood Fan, Refrigerator, Stove-Electric, Washer, Window Coverings
Heating	Forced Air-1, Natural Gas
Stories	2
Has Basement	Yes
Basement	Partial, Finished

### Exterior

Exterior	Wood, Stucco
Exterior Features	Landscaped, No Back Lane, Schools, Shopping Nearby
Roof	Asphalt Shingles
Construction	Wood, Stucco
Foundation	Concrete Perimeter

### Additional Information

Date Listed	May 21st, 2025
Days on Market	44
Zoning	Zone 29

Condo Fee                \$468

DATA IS DEEMED RELIABLE BUT IS NOT GUARANTEED ACCURATE BY THE REALTORS® ASSOCIATION OF EDMONTON. COPYRIGHT 2025 BY THE REALTORS® ASSOCIATION OF EDMONTON. ALL RIGHTS RESERVED.Trademarks are owned or controlled by the Canadian Real Estate Association (CREA) and identify real estate professionals who are members of CREA (REALTOR®, REALTORS®) and/or the quality of services they provide (MLS®, Multiple Listing Service®)

Listing information last updated on July 4th, 2025 at 5:02pm MDT