

\$174,900 - 219 240 Spruce Ridge Road, Spruce Grove

MLS® #E4438607

\$174,900

2 Bedroom, 2.00 Bathroom, 844 sqft

Condo / Townhouse on 0.00 Acres

Spruce Ridge, Spruce Grove, AB

Modern Condo Living at Spruce Ridge Manor. Welcome to Spruce Ridge Manor, where convenience meets comfort in this stunning 2-bedroom, 2-bathroom condo. Featuring a bright, open floor plan, this home offers a spacious living area ideal for both relaxation and entertaining. The kitchen is full of natural light, perfect for culinary adventures, while the large master bedroom boasts ample closet space and a luxurious 4-piece ensuite bathroom. Enjoy the ease of in-suite laundry and storage, and step onto the south-facing balcony for beautiful views that brighten every day. This secure building provides peace of mind, with a dedicated on-site caretaker and secured underground parking—a must-have for Alberta's chilly winters. Conveniently located close to shopping, dining, and recreational hotspots including the TRI Leisure Centre, parks, walking paths, and restaurants, this condo also offers quick access to both Highway 16 and 16A, making commuting a breeze.

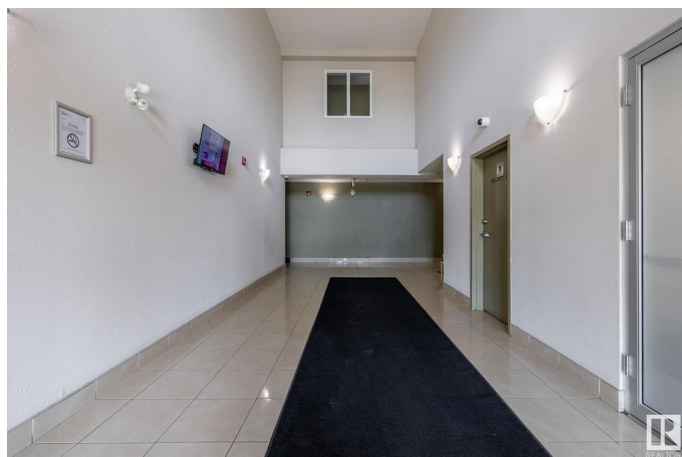
Built in 2008

Essential Information

MLS® # E4438607

Price \$174,900

Bedrooms 2



Bathrooms	2.00
Full Baths	2
Square Footage	844
Acres	0.00
Year Built	2008
Type	Condo / Townhouse
Sub-Type	Lowrise Apartment
Style	Single Level Apartment
Status	Active

Community Information

Address	219 240 Spruce Ridge Road
Area	Spruce Grove
Subdivision	Spruce Ridge
City	Spruce Grove
County	ALBERTA
Province	AB
Postal Code	T7X 0G5

Amenities

Amenities	Intercom, No Animal Home, Parking-Visitor
Parking Spaces	1
Parking	Stall, Underground

Interior

Interior Features	ensuite bathroom
Appliances	Dishwasher-Built-In, Dryer, Hood Fan, Oven-Microwave, Refrigerator, Stove-Electric, Washer
Heating	Baseboard, Water
# of Stories	4
Stories	1
Has Basement	Yes
Basement	None, No Basement

Exterior

Exterior	Wood, Stucco
Exterior Features	Flat Site, Golf Nearby, Landscaped, Level Land, Playground Nearby
Roof	Asphalt Shingles
Construction	Wood, Stucco

Foundation Concrete Perimeter

Additional Information

Date Listed May 26th, 2025
Days on Market 22
Zoning Zone 91
Condo Fee \$440

DATA IS DEEMED RELIABLE BUT IS NOT GUARANTEED ACCURATE BY THE REALTORS® ASSOCIATION OF EDMONTON. COPYRIGHT 2025 BY THE REALTORS® ASSOCIATION OF EDMONTON. ALL RIGHTS RESERVED.Trademarks are owned or controlled by the Canadian Real Estate Association (CREA) and identify real estate professionals who are members of CREA (REALTOR®, REALTORS®) and/or the quality of services they provide (MLS®, Multiple Listing Service®)
Listing information last updated on June 17th, 2025 at 1:02am MDT