

\$319,000 - 12109 45 Street, Edmonton

MLS® #E4438610

\$319,000

2 Bedroom, 1.00 Bathroom, 1,355 sqft

Single Family on 0.00 Acres

Beacon Heights, Edmonton, AB

Welcome to this original farmhouse blending classic charm with modern updates in the heart of Beacon Heights. Situated on a huge 50x123 lot, this home offers incredible outdoor space including a beautiful front porch. Step inside a spacious main floor featuring a large living and dining area, that flows into a sun filled kitchen and breakfast nook. Take the entertaining outside through french doors, opening onto a new deck and private backyard. Work from home with ease from your main floor office space, or make it a great art room. Upstairs you will find a large primary with vaulted ceilings and a walk in closet. A second large bedroom and a gorgeous bathroom with a brass claw foot tub and separate shower. This beautiful character home has numerous updates including newer roof, hot water tank and high efficient furnace. Walk to nearby schools, parks and local shops, and enjoy the easy access to all corners of Edmonton. With a garage and large front driveway, makes this the perfect place to call home!

Built in 1912

Essential Information

MLS® # E4438610

Price \$319,000



Bedrooms	2
Bathrooms	1.00
Full Baths	1
Square Footage	1,355
Acres	0.00
Year Built	1912
Type	Single Family
Sub-Type	Detached Single Family
Style	2 Storey
Status	Active

Community Information

Address	12109 45 Street
Area	Edmonton
Subdivision	Beacon Heights
City	Edmonton
County	ALBERTA
Province	AB
Postal Code	T5W 2T9

Amenities

Amenities	Hot Water Natural Gas, No Smoking Home, Parking-Extra, Vaulted Ceiling, Vinyl Windows
Parking Spaces	3
Parking	Single Garage Detached

Interior

Appliances	Dishwasher-Built-In, Dryer, Garburator, Hood Fan, Refrigerator, Stove-Electric, Washer, Window Coverings
Heating	Forced Air-1, Natural Gas
Stories	2
Has Basement	Yes
Basement	Full, Unfinished

Exterior

Exterior	Wood
Exterior Features	Landscaped, Playground Nearby, Schools, Shopping Nearby
Roof	Asphalt Shingles
Construction	Wood

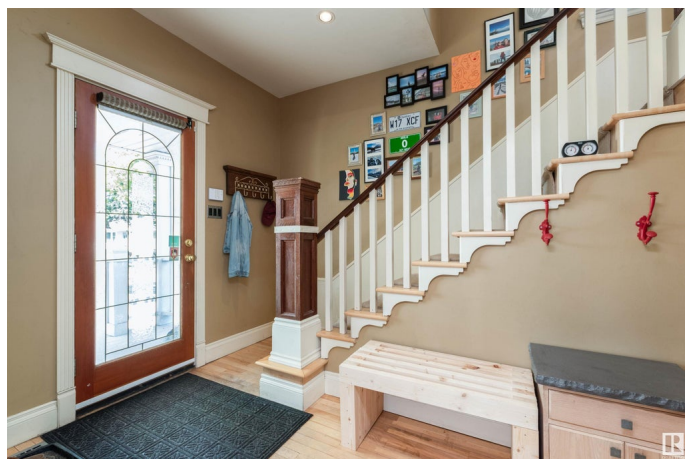
Foundation Concrete Perimeter

Additional Information

Date Listed May 26th, 2025

Days on Market 37

Zoning Zone 23



DATA IS DEEMED RELIABLE BUT IS NOT GUARANTEED ACCURATE BY THE REALTORS® ASSOCIATION OF EDMONTON. COPYRIGHT 2025 BY THE REALTORS® ASSOCIATION OF EDMONTON. ALL RIGHTS RESERVED. Trademarks are owned or controlled by the Canadian Real Estate Association (CREA) and identify real estate professionals who are members of CREA (REALTOR®, REALTORS®) and/or the quality of services they provide (MLS®, Multiple Listing Service®)

Listing information last updated on July 2nd, 2025 at 9:02pm MDT