

\$494,990 - 1210 163 Street, Edmonton

MLS® #E4439253

\$494,990

4 Bedroom, 2.50 Bathroom, 1,740 sqft

Single Family on 0.00 Acres

Glenridding Heights, Edmonton, AB

Step into this spacious 2-storey half duplex that offers the feel of a single-family home, with 1,740 sqft space, 4 bedrooms, and 2.5 bathrooms—plenty of room for the whole family! The main floor showcases elegant 24"x24" tile flooring throughout, with the 4th main-floor bedroom enhanced by warm hardwood flooring—ideal for guests, a home office, or playroom. Upstairs, the large primary suite includes a walk-in closet and a luxurious 5-piece ensuite featuring double sinks and a stunning spa-style shower system—itâ€™s like having your own private retreat. Two additional bedrooms, a full bathroom, and a convenient upstairs laundry room complete the upper level. Additional highlights include a separate entry to a partly finished basement, rear deck, and double detached garage. Perfectly located just steps from a Kâ€™9 school, nearby shopping, and just a block from an all-seasons park with a toboggan hill, playground, and sports fields—this home offers the perfect blend of comfort, style, and convenience.

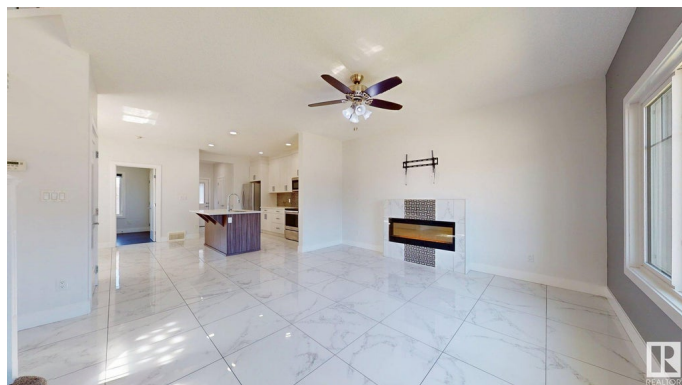
Built in 2017

Essential Information

MLS® # E4439253

Price \$494,990

Bedrooms 4



Bathrooms	2.50
Full Baths	2
Half Baths	1
Square Footage	1,740
Acres	0.00
Year Built	2017
Type	Single Family
Sub-Type	Half Duplex
Style	2 Storey
Status	Active

Community Information

Address	1210 163 Street
Area	Edmonton
Subdivision	Glenridding Heights
City	Edmonton
County	ALBERTA
Province	AB
Postal Code	T6W 3K4

Amenities

Amenities	Carbon Monoxide Detectors, Deck, Detectors Smoke, No Animal Home, No Smoking Home
Parking	Double Garage Detached

Interior

Interior Features	ensuite bathroom
Appliances	Dishwasher-Built-In, Dryer, Microwave Hood Fan, Refrigerator, Stove-Electric, Washer
Heating	Forced Air-1, Natural Gas
Fireplace	Yes
Fireplaces	Heatilator/Fan, Remote Control, Tile Surround
Stories	2
Has Basement	Yes
Basement	Full, Partially Finished

Exterior

Exterior	Wood, Vinyl
Exterior Features	Back Lane, Flat Site, Golf Nearby, Playground Nearby, Public

	Transportation, Shopping Nearby
Roof	Asphalt Shingles
Construction	Wood, Vinyl
Foundation	Concrete Perimeter

Additional Information

Date Listed	May 29th, 2025
Days on Market	39
Zoning	Zone 56

DATA IS DEEMED RELIABLE BUT IS NOT GUARANTEED ACCURATE BY THE REALTORS® ASSOCIATION OF EDMONTON. COPYRIGHT 2025 BY THE REALTORS® ASSOCIATION OF EDMONTON. ALL RIGHTS RESERVED. Trademarks are owned or controlled by the Canadian Real Estate Association (CREA) and identify real estate professionals who are members of CREA (REALTOR®, REALTORS®) and/or the quality of services they provide (MLS®, Multiple Listing Service®)

Listing information last updated on July 6th, 2025 at 11:47pm MDT