

Courtesy Of Lauren K Hunt Of RE/MAX River City

\$219,000 - 24 650 Grandin Drive, Morinville

MLS® #E4440776

\$219,000

3 Bedroom, 2.50 Bathroom, 1,152 sqft
Condo / Townhouse on 0.00 Acres

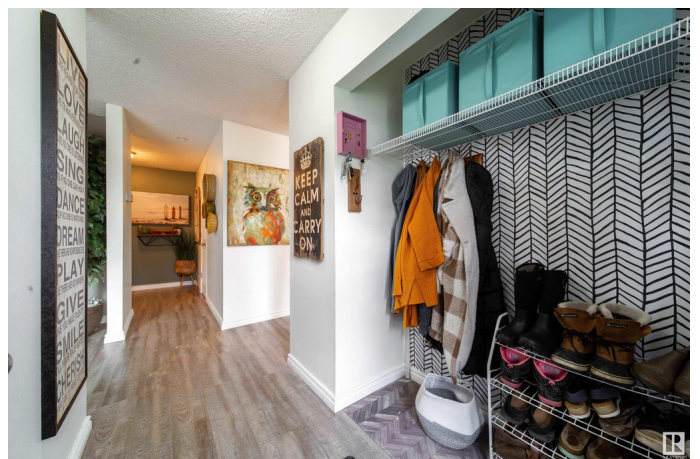
Morinville, Morinville, AB

Welcome Home! This adorable and well decorated 1152sf 2-storey townhouse has a lot to offer. 3+ beds and 3 baths. With brand new flooring throughout and newly painted, she is turn-key and move-in ready. Enjoy all the natural light from the large windows. All white kitchen with matching appliances she has all the charm. Enjoy the view as it looks onto green space out front. Upstairs you will find 2 beds+den which can be converted back to a third bedroom. Downstairs can be used as additional recreation space or in-law suite style living area. Brand new W/D and newer furnace and HWT. No shortage of storage and perfect for first time buyers with low condo fees! Conveniently located near parks, schools and local shopping this place has it all. Well maintained and meticulously looked after. Enjoy all Morinville has to offer minutes away by car or take to bike trails and paths that connect the communities. Welcome to Meadow Wood Village. Welcome Home.

Built in 1977

Essential Information

MLS® #	E4440776
Price	\$219,000
Bedrooms	3
Bathrooms	2.50



Full Baths	2
Half Baths	1
Square Footage	1,152
Acres	0.00
Year Built	1977
Type	Condo / Townhouse
Sub-Type	Townhouse
Style	2 Storey
Status	Active

Community Information

Address	24 650 Grandin Drive
Area	Morinville
Subdivision	Morinville
City	Morinville
County	ALBERTA
Province	AB
Postal Code	T8R 1K5

Amenities

Amenities	On Street Parking, Detectors Smoke, No Smoking Home, Vinyl Windows, See Remarks
Parking	2 Outdoor Stalls

Interior

Appliances	Dishwasher-Built-In, Dryer, Washer, See Remarks, Refrigerators-Two, Stoves-Two
Heating	Forced Air-1, Natural Gas
Stories	2
Has Basement	Yes
Basement	Full, Finished

Exterior

Exterior	Wood, Vinyl
Exterior Features	Fenced, Flat Site, No Back Lane, No Through Road, Playground Nearby, Public Transportation, Schools, Shopping Nearby, See Remarks
Roof	Asphalt Shingles
Construction	Wood, Vinyl
Foundation	Concrete Perimeter

Additional Information

Date Listed	June 5th, 2025
Days on Market	12
Zoning	Zone 61
Condo Fee	\$339

DATA IS DEEMED RELIABLE BUT IS NOT GUARANTEED ACCURATE BY THE REALTORS® ASSOCIATION OF EDMONTON. COPYRIGHT 2025 BY THE REALTORS® ASSOCIATION OF EDMONTON. ALL RIGHTS RESERVED.Trademarks are owned or controlled by the Canadian Real Estate Association (CREA) and identify real estate professionals who are members of CREA (REALTOR®, REALTORS®) and/or the quality of services they provide (MLS®, Multiple Listing Service®)

Listing information last updated on June 17th, 2025 at 1:32am MDT