

## **\$659,900 - 1547 Siskin Link Link, Edmonton**

MLS® #E4441993

**\$659,900**

3 Bedroom, 2.50 Bathroom, 2,115 sqft

Single Family on 0.00 Acres

Kinglet Gardens, Edmonton, AB

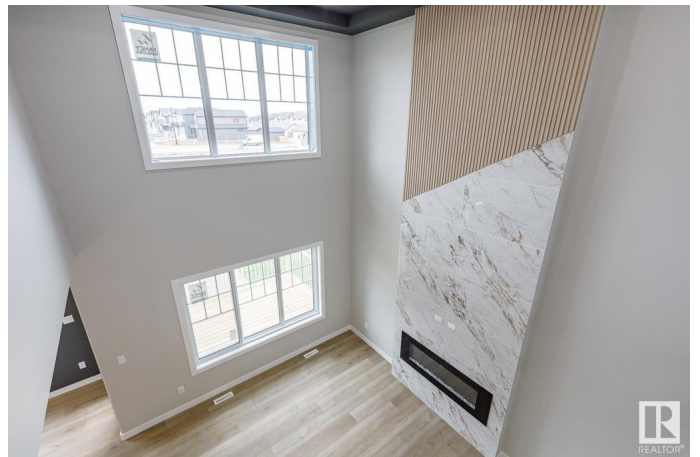
Welcome to this brand new 2101 SQFT 2 Storey Chelsea model home by award winning Blackstone Homes in Kinglet Gardens. Upon entering you will be welcomed by nice foyer leading to a much needed den, perfect for work from home days, mudroom with built ins with walk through pantry leading to beautiful kitchen with huge island. Dining room with wet bar, perfect for entertaining. Great room offers 18' open to below ceiling with linear fireplace finished with beautiful tiles & coffered ceiling. The 2nd floor offers 3 big size bedrooms, 2.5 baths, bonus room & huge laundry room. Big size master bedroom with beautiful spa like ensuite offering double sinks, shower & freestanding tub, huge WIC. Other features - Separate entrance, 9' main/basement ceiling, upgraded shower. MDF shelving throughout, feature walls, upgraded plumbing/flooring/electrical, upgraded quartz, 2 tone kitchen cabinets, black fixtures, all appliances, New Home Warranty. Close to lake, park, shopping, Anthony Handay and Yellow head Trail!!

Built in 2025

### **Essential Information**

MLS® # E4441993

Price \$659,900



Bedrooms	3
Bathrooms	2.50
Full Baths	2
Half Baths	1
Square Footage	2,115
Acres	0.00
Year Built	2025
Type	Single Family
Sub-Type	Detached Single Family
Style	2 Storey
Status	Active

### Community Information

Address	1547 Siskin Link Link
Area	Edmonton
Subdivision	Kinglet Gardens
City	Edmonton
County	ALBERTA
Province	AB
Postal Code	T5S 0T9

### Amenities

Amenities	Bar, Carbon Monoxide Detectors, Ceiling 9 ft., Closet Organizers, No Animal Home, No Smoking Home, Vinyl Windows, 9 ft. Basement Ceiling
Parking	Double Garage Attached

### Interior

Interior Features	ensuite bathroom
Appliances	Dishwasher-Built-In, Dryer, Garage Opener, Hood Fan, Oven-Built-In, Oven-Microwave, Refrigerator, Stove-Countertop Gas, Washer
Heating	Forced Air-1, Natural Gas
Fireplace	Yes
Fireplaces	Insert
Stories	2
Has Basement	Yes
Basement	Full, Unfinished

### Exterior

Exterior	Wood, Stone, Vinyl
Exterior Features	Golf Nearby, No Back Lane, Not Fenced, Not Landscaped, Picnic Area, Playground Nearby, Shopping Nearby
Roof	Asphalt Shingles
Construction	Wood, Stone, Vinyl
Foundation	Concrete Perimeter

### **Additional Information**

Date Listed	June 12th, 2025
Days on Market	4
Zoning	Zone 59
HOA Fees Freq.	Annually

DATA IS DEEMED RELIABLE BUT IS NOT GUARANTEED ACCURATE BY THE REALTORS® ASSOCIATION OF EDMONTON. COPYRIGHT 2025 BY THE REALTORS® ASSOCIATION OF EDMONTON. ALL RIGHTS RESERVED. Trademarks are owned or controlled by the Canadian Real Estate Association (CREA) and identify real estate professionals who are members of CREA (REALTOR®, REALTORS®) and/or the quality of services they provide (MLS®, Multiple Listing Service®)

Listing information last updated on June 16th, 2025 at 3:47pm MDT