

## \$228,000 - 102 1316 Windermere Way, Edmonton

MLS® #E4444007

**\$228,000**

1 Bedroom, 1.00 Bathroom, 658 sqft

Condo / Townhouse on 0.00 Acres

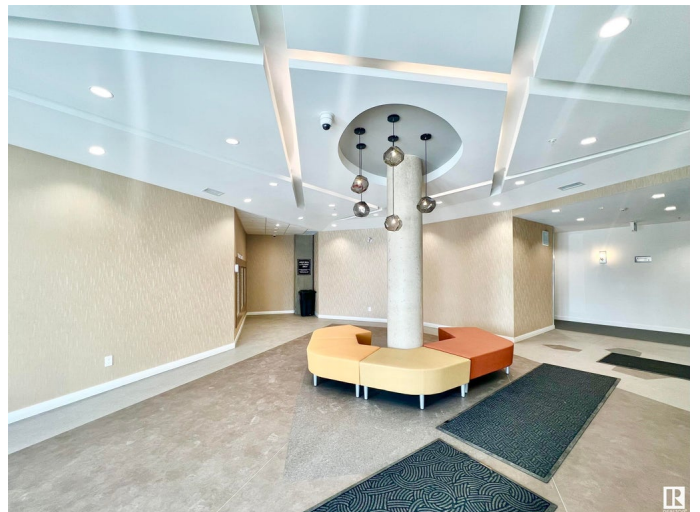
Windermere, Edmonton, AB

Discover affordable luxury at The LUX in Upper Windermere, featuring stunning 1-bedroom residences with designer finishes including quartz counters, 10' ceilings, complete with in-suite laundry and exceptional building amenities like a heated underground parking, state-of-the-art fitness center, and pet-friendly/Airbnb-approved units - all while enjoying serene pond/park views and an unbeatable walkable location just steps from Currents of Windermere's shopping, dining, and entertainment, with easy access to River Valley trails and major transportation routes

Built in 2019

### Essential Information

MLS® #	E4444007
Price	\$228,000
Bedrooms	1
Bathrooms	1.00
Full Baths	1
Square Footage	658
Acres	0.00
Year Built	2019
Type	Condo / Townhouse
Sub-Type	Lowrise Apartment
Style	Single Level Apartment
Status	Active



## Community Information

Address	102 1316 Windermere Way
Area	Edmonton
Subdivision	Windermere
City	Edmonton
County	ALBERTA
Province	AB
Postal Code	T6W 2J3

## Amenities

Amenities	Air Conditioner, Ceiling 10 ft., Intercom, Parking-Visitor, Patio
Parking	Heated, Underground

## Interior

Interior Features	ensuite bathroom
Appliances	Air Conditioning-Central, Dishwasher-Built-In, Garage Control, Microwave Hood Fan, Refrigerator, Stacked Washer/Dryer, Stove-Electric, Window Coverings
Heating	Heat Pump, Natural Gas
# of Stories	5
Stories	1
Has Basement	Yes
Basement	None, No Basement

## Exterior

Exterior	Concrete, Metal, Stone, Stucco
Exterior Features	Airport Nearby, Backs Onto Lake, Flat Site, Fruit Trees/Shrubs, Golf Nearby, Landscaped, Playground Nearby, Public Swimming Pool, Public Transportation, Schools, Shopping Nearby, View City, See Remarks
Roof	Asphalt Shingles
Construction	Concrete, Metal, Stone, Stucco
Foundation	Concrete Perimeter

## School Information

Elementary	CONSTABLE DANIEL WOODALL
Middle	RIVERBEND SCHOOL
High	LILLIAN OSBORNE SCHOOL

## Additional Information

Date Listed	June 24th, 2025
-------------	-----------------

Days on Market	8
Zoning	Zone 56
Condo Fee	\$285

DATA IS DEEMED RELIABLE BUT IS NOT GUARANTEED ACCURATE BY THE REALTORS® ASSOCIATION OF EDMONTON. COPYRIGHT 2025 BY THE REALTORS® ASSOCIATION OF EDMONTON. ALL RIGHTS RESERVED. Trademarks are owned or controlled by the Canadian Real Estate Association (CREA) and identify real estate professionals who are members of CREA (REALTOR®, REALTORS®) and/or the quality of services they provide (MLS®, Multiple Listing Service®)

Listing information last updated on July 2nd, 2025 at 7:32am MDT