

\$234,998 - 32 Encore Crescent, St. Albert

MLS® #E4444453

\$234,998

0 Bedroom, 0.00 Bathroom,
Single Family on 0.00 Acres

Erin Ridge North, St. Albert, AB

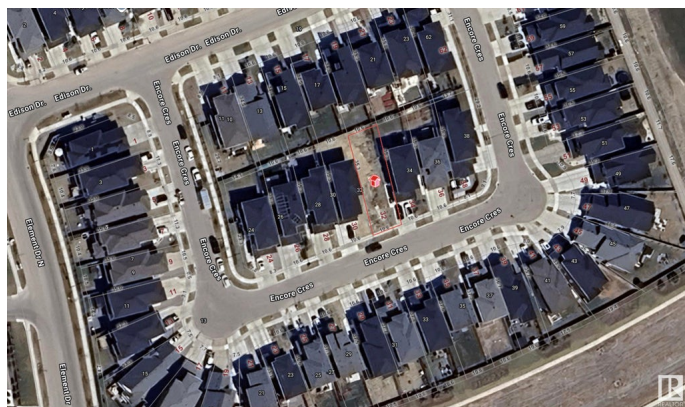
Build Your Dream Home in St. Albert! This fully serviced 26â€™™ pocket lot is ready for constructionâ€”just bring your plans and apply for permits. Nestled in a developed section of a growing neighborhood, youâ€™™ll enjoy walking distance to Lois E. Hole Elementary School, Costco, and a variety of shopping and dining options. An opportunity in one of St. Albertâ€™™s most desirable areas!

Essential Information

MLS® #	E4444453
Price	\$234,998
Bathrooms	0.00
Acres	0.00
Type	Single Family
Sub-Type	Vacant Lot/Land
Status	Active

Community Information

Address	32 Encore Crescent
Area	St. Albert
Subdivision	Erin Ridge North
City	St. Albert
County	ALBERTA
Province	AB
Postal Code	T8N 7W1



Exterior

Exterior Features Flat Site, Playground Nearby, Schools, Shopping Nearby

Additional Information

Date Listed June 26th, 2025
Days on Market 8
Zoning Zone 24

DATA IS DEEMED RELIABLE BUT IS NOT GUARANTEED ACCURATE BY THE REALTORS® ASSOCIATION OF EDMONTON. COPYRIGHT 2025 BY THE REALTORS® ASSOCIATION OF EDMONTON. ALL RIGHTS RESERVED.Trademarks are owned or controlled by the Canadian Real Estate Association (CREA) and identify real estate professionals who are members of CREA (REALTOR®, REALTORS®) and/or the quality of services they provide (MLS®, Multiple Listing Service®)
Listing information last updated on July 3rd, 2025 at 10:02pm MDT