

\$574,900 - 483 Meadowview Drive, Sherwood Park

MLS® #E4444650

\$574,900

4 Bedroom, 3.00 Bathroom, 1,417 sqft

Single Family on 0.00 Acres

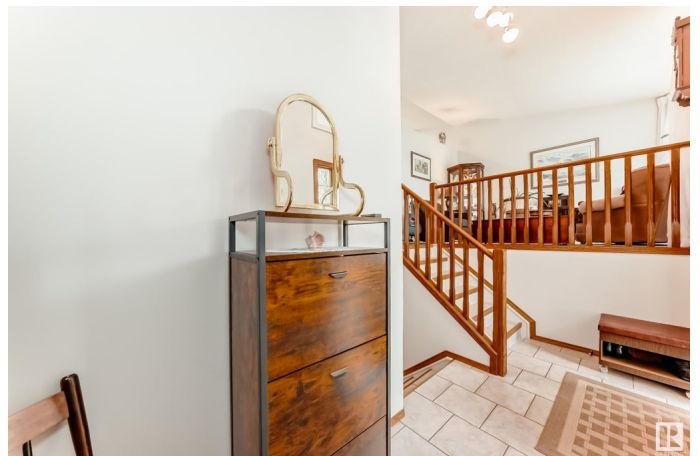
Clarkdale Meadows, Sherwood Park, AB

ABSOLUTELY IMMACULATE in Clarkdale Meadows! This lovingly maintained 2+2 bedroom and a den, 3 bathroom home shines with pride of ownership and thoughtful upgrades throughout. Enjoy new triple pane windows on the main floor, fresh paint, LED lighting, additional blown-in insulation, and a stunning kitchen renovation featuring quartz countertops and vinyl plank flooring! Main floor laundry, large storage area and an oversized double attached garage adds convenience, while the yard is a heavenly retreat with blooming shrubs, perennials and flowers from early spring to late fall! As well as fruit trees galore such as plums, cherries, apple, raspberries, haskaps and a glorious grapevine!! This one is truly special! "don't miss out!"

Built in 1997

Essential Information

MLS® #	E4444650
Price	\$574,900
Bedrooms	4
Bathrooms	3.00
Full Baths	3
Square Footage	1,417
Acres	0.00
Year Built	1997



Type	Single Family
Sub-Type	Detached Single Family
Style	Bi-Level
Status	Active

Community Information

Address	483 Meadowview Drive
Area	Sherwood Park
Subdivision	Clarkdale Meadows
City	Sherwood Park
County	ALBERTA
Province	AB
Postal Code	T8A 6L2

Amenities

Amenities	Deck, No Smoking Home, Vaulted Ceiling, Vinyl Windows
Parking	Double Garage Attached

Interior

Interior Features	ensuite bathroom
Appliances	Alarm/Security System, Dishwasher-Built-In, Dryer, Garage Control, Garage Opener, Microwave Hood Fan, Refrigerator, Storage Shed, Stove-Electric, Washer, Window Coverings
Heating	Forced Air-1, Natural Gas
Stories	2
Has Basement	Yes
Basement	Full, Finished

Exterior

Exterior	Wood, Brick, Vinyl
Exterior Features	Fenced, Landscaped, Playground Nearby, Public Transportation, Schools, Shopping Nearby
Roof	Asphalt Shingles
Construction	Wood, Brick, Vinyl
Foundation	Concrete Perimeter

Additional Information

Date Listed	June 27th, 2025
Days on Market	6
Zoning	Zone 25

DATA IS DEEMED RELIABLE BUT IS NOT GUARANTEED ACCURATE BY THE REALTORS® ASSOCIATION OF EDMONTON. COPYRIGHT 2025 BY THE REALTORS® ASSOCIATION OF EDMONTON. ALL RIGHTS RESERVED.Trademarks are owned or controlled by the Canadian Real Estate Association (CREA) and identify real estate professionals who are members of CREA (REALTOR®, REALTORS®) and/or the quality of services they provide (MLS®, Multiple Listing Service®)

Listing information last updated on July 3rd, 2025 at 3:02pm MDT