

\$259,900 - 216 1589 Glastonbury Boulevard, Edmonton

MLS® #E4450587

\$259,900

2 Bedroom, 1.50 Bathroom, 921 sqft

Condo / Townhouse on 0.00 Acres

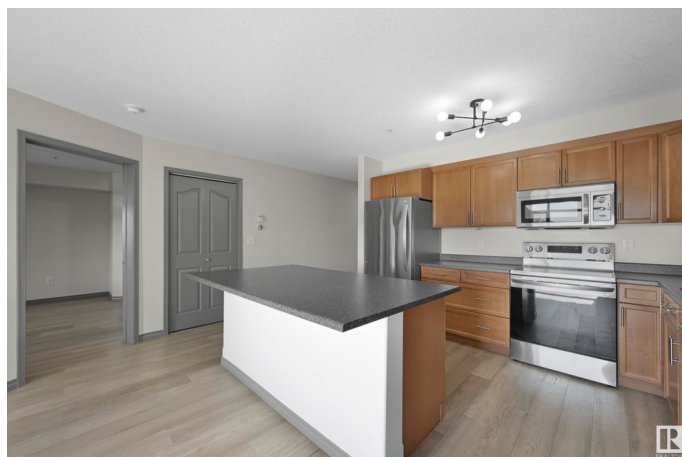
Glastonbury, Edmonton, AB

Condo Living at its Finest! Welcome to this gorgeous 2 Bed Condo located in Glastonbury Village. Gleaming Flooring, Open Floor Plan, Spacious Kitchen with Ample Cabinetry & Upgraded Sink. Centre Island and All Kitchen Appliances. Living room is an excellent size with patio doors leading to your Large 140 SF covered Private Balcony with a natural gas hook up. Large Master Bedroom features dual closets, spacious 4 pc ensuite, large soaker tub w/ floor to ceiling tile. Spacious 2nd Bedroom perfect for an office, half bath, in suite laundry, A/C. Custom Window Coverings. Secured Heated Underground titled parking stall with a storage cage. Underground Heated Parking Stall. Well managed building with exercise room, social rooms, Guest Suite, bike storage & visitor parking. 18+ building. Move in and Enjoy!

Built in 2006

Essential Information

MLS® #	E4450587
Price	\$259,900
Bedrooms	2
Bathrooms	1.50
Full Baths	1
Half Baths	1
Square Footage	921



Acres	0.00
Year Built	2006
Type	Condo / Townhouse
Sub-Type	Lowrise Apartment
Style	Single Level Apartment
Status	Active

Community Information

Address	216 1589 Glastonbury Boulevard
Area	Edmonton
Subdivision	Glastonbury
City	Edmonton
County	ALBERTA
Province	AB
Postal Code	T5T 2V1

Amenities

Amenities	Air Conditioner, Closet Organizers, Exercise Room, Guest Suite, No Animal Home, No Smoking Home, Parking-Visitor, Patio, Smart/Program. Thermostat, Social Rooms, Sprinkler System-Fire, Natural Gas BBQ Hookup
Parking	Underground

Interior

Interior Features	ensuite bathroom
Appliances	Dishwasher-Built-In, Dryer, Refrigerator, Stove-Electric, Washer, Window Coverings
Heating	Heat Pump, Natural Gas
# of Stories	4
Stories	1
Has Basement	Yes
Basement	None, No Basement

Exterior

Exterior	Wood, Stone, Stucco
Exterior Features	Golf Nearby, Public Transportation, Shopping Nearby
Roof	Asphalt Shingles
Construction	Wood, Stone, Stucco
Foundation	Concrete Perimeter

Additional Information

Date Listed	July 31st, 2025
Days on Market	2
Zoning	Zone 58
HOA Fees	175
HOA Fees Freq.	Annually
Condo Fee	\$501

DATA IS DEEMED RELIABLE BUT IS NOT GUARANTEED ACCURATE BY THE REALTORS® ASSOCIATION OF EDMONTON. COPYRIGHT 2025 BY THE REALTORS® ASSOCIATION OF EDMONTON. ALL RIGHTS RESERVED.Trademarks are owned or controlled by the Canadian Real Estate Association (CREA) and identify real estate professionals who are members of CREA (REALTOR®, REALTORS®) and/or the quality of services they provide (MLS®, Multiple Listing Service®)

Listing information last updated on August 2nd, 2025 at 2:47pm MDT