

\$685,000 - 28 Greer Crescent, St. Albert

MLS® #E4451701

\$685,000

4 Bedroom, 2.50 Bathroom, 1,697 sqft

Single Family on 0.00 Acres

Grandin, St. Albert, AB

Exquisite home! It's situated on an 870 square meter lot in the mature neighbourhood of Grandin-it's been renovated inside and out. Its updates include brand new siding, shingles, soffits, fascia, gutters, windows, doors, frames, a garage door. This carpet-free home offers 4 bedrooms, 3 bathrooms, and a total living area of 2,100 sqft. The layout provides a perfect flow from the living room to the kitchen & into the family room, which features a wood-burning fireplace. As a bonus, the 4th bedroom can be used as a home office. Upstairs, you'll find a spacious primary bedroom complete with a stylish ensuite, along with 2 additional bedrooms and a main bathroom. The basement is dedicated to fun, play & games. You will be amazed by the backyardâ€”perfect for entertaining! Invite your friends over for a summer night by the fire pit, or set up a tent for a gathering. It's conveniently located, with a short five-minute walk to school & quick access to the Anthony Henday.

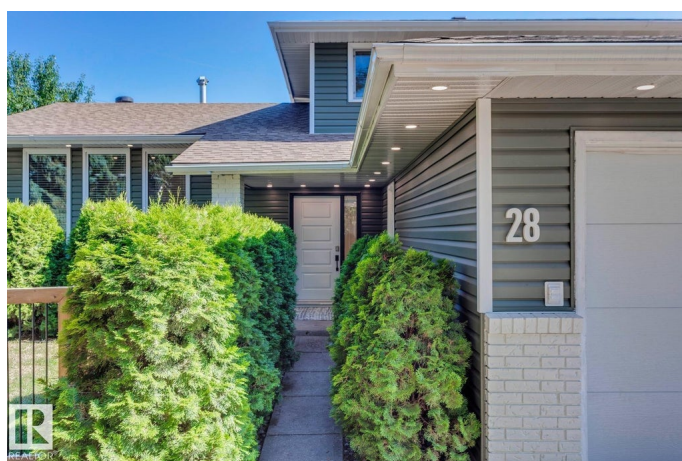
Built in 1973

Essential Information

MLS® # E4451701

Price \$685,000

Bedrooms 4



Bathrooms	2.50
Full Baths	2
Half Baths	1
Square Footage	1,697
Acres	0.00
Year Built	1973
Type	Single Family
Sub-Type	Detached Single Family
Style	4 Level Split
Status	Active

Community Information

Address	28 Greer Crescent
Area	St. Albert
Subdivision	Grandin
City	St. Albert
County	ALBERTA
Province	AB
Postal Code	T8N 1T8

Amenities

Amenities	Closet Organizers, Detectors Smoke, Front Porch, No Smoking Home, Smart/Program. Thermostat, Vinyl Windows
Parking Spaces	4
Parking	Double Garage Attached

Interior

Interior Features	ensuite bathroom
Appliances	Dishwasher-Built-In, Dryer, Refrigerator, Stove-Electric, Washer
Heating	Forced Air-1, Natural Gas
Fireplace	Yes
Fireplaces	Brass Surround, Glass Door, Mantel
Stories	4
Has Basement	Yes
Basement	Full, Finished

Exterior

Exterior	Wood, Vinyl
Exterior Features	Fenced, Flat Site, Landscaped, Low Maintenance Landscape, No Back

	Lane, Playground Nearby, Schools
Roof	Asphalt Shingles
Construction	Wood, Vinyl
Foundation	Concrete Perimeter

Additional Information

Date Listed	August 7th, 2025
Days on Market	12
Zoning	Zone 24

DATA IS DEEMED RELIABLE BUT IS NOT GUARANTEED ACCURATE BY THE REALTORS® ASSOCIATION OF EDMONTON. COPYRIGHT 2025 BY THE REALTORS® ASSOCIATION OF EDMONTON. ALL RIGHTS RESERVED. Trademarks are owned or controlled by the Canadian Real Estate Association (CREA) and identify real estate professionals who are members of CREA (REALTOR®, REALTORS®) and/or the quality of services they provide (MLS®, Multiple Listing Service®)

Listing information last updated on August 19th, 2025 at 3:32am MDT