

\$644,950 - 449 Conroy Crescent, Edmonton

MLS® #E4453841

\$644,950

4 Bedroom, 2.50 Bathroom, 1,969 sqft

Single Family on 0.00 Acres

Cavanagh, Edmonton, AB

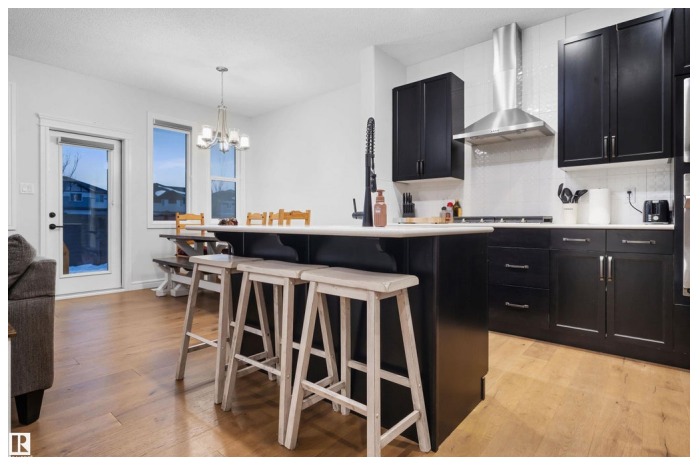
Welcome to this stunning 2-storey home in the desirable community of Cavanagh! Built in 2022, this upgraded single-family home offers nearly 2,000 sq. ft. The main floor boasts an open-concept layout featuring a spacious living room, a formal dining area, a modern kitchen with quartz counters, and a fully equipped spice kitchen for added convenience. A half bath and access to the double attached garage complete this level. Upstairs you'll find 4 generously sized bedrooms, including a primary suite with a walk-in closet and a luxurious ensuite. A full bath, versatile bonus room, and upstairs laundry make family living easy and functional. Situated on a landscaped and fenced lot with no back neighbours and only one side neighbour, this home offers exceptional privacy. Enjoy quick access to schools, parks, shopping, and major roadways – an ideal location for families. Don't miss your chance to own this beautifully upgraded home in one of South Edmonton's most sought-after neighbourhoods!

Built in 2022

Essential Information

MLS® # E4453841

Price \$644,950



Bedrooms	4
Bathrooms	2.50
Full Baths	2
Half Baths	1
Square Footage	1,969
Acres	0.00
Year Built	2022
Type	Single Family
Sub-Type	Detached Single Family
Style	2 Storey
Status	Active

Community Information

Address	449 Conroy Crescent
Area	Edmonton
Subdivision	Cavanagh
City	Edmonton
County	ALBERTA
Province	AB
Postal Code	T6W 5A9

Amenities

Amenities	See Remarks
Parking	Double Garage Attached

Interior

Interior Features	ensuite bathroom
Appliances	Dishwasher-Built-In, Dryer, Garage Control, Garage Opener, Oven-Built-In, Oven-Microwave, Refrigerator, Stove-Countertop Gas, Stove-Electric, Washer, Window Coverings
Heating	Forced Air-1, Natural Gas
Stories	2
Has Basement	Yes
Basement	Full, Unfinished

Exterior

Exterior	Concrete, Vinyl
Exterior Features	Airport Nearby, Fenced, Landscaped, Playground Nearby, Schools, Shopping Nearby

Roof	Asphalt Shingles
Construction	Concrete, Vinyl
Foundation	Concrete Perimeter

Additional Information

Date Listed	August 20th, 2025
Days on Market	1
Zoning	Zone 55

DATA IS DEEMED RELIABLE BUT IS NOT GUARANTEED ACCURATE BY THE REALTORS® ASSOCIATION OF EDMONTON. COPYRIGHT 2025 BY THE REALTORS® ASSOCIATION OF EDMONTON. ALL RIGHTS RESERVED.Trademarks are owned or controlled by the Canadian Real Estate Association (CREA) and identify real estate professionals who are members of CREA (REALTOR®, REALTORS®) and/or the quality of services they provide (MLS®, Multiple Listing Service®)

Listing information last updated on August 21st, 2025 at 3:47am MDT