

\$599,900 - 618 Layton Court, Edmonton

MLS® #E4455262

\$599,900

4 Bedroom, 2.00 Bathroom, 1,798 sqft

Single Family on 0.00 Acres

Leger, Edmonton, AB

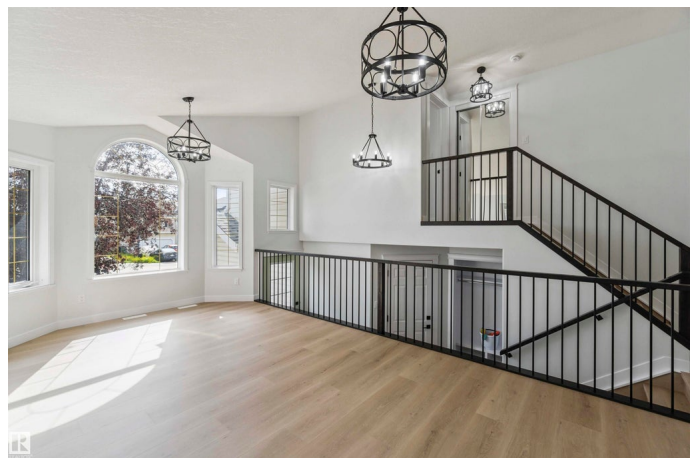
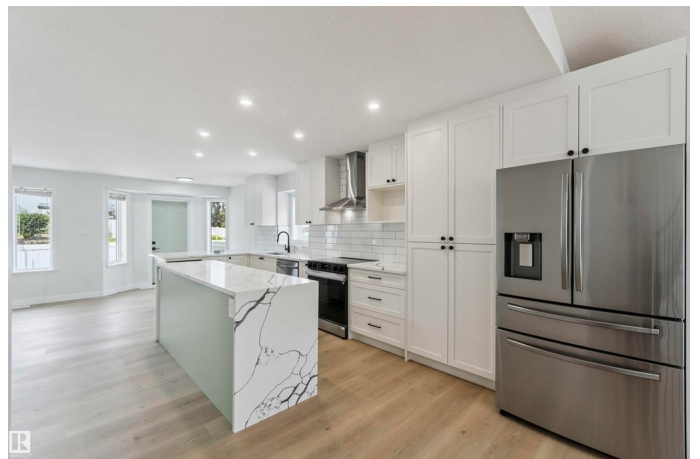
This 1800 sq ft, 4 bedroom home has been professionally RENOVATED and LANDSCAPED. Upon entering; you're greeted with rustic wide-plank vinyl floors, a stunning stain-grade railing, and an open and bright living area w/ new light fixtures. The classy kitchen encompasses tons of cabinet and counterspace; including a floor-to-ceiling pantry, an island with dual waterfalls, a breakfast bar, stainless steel appliances, pot lights, and a subway tile backsplash. The main level is finished off with a large living room, with gas F/P, 3 large bedrooms, and a beautiful 4 pc. main bath w/ a custom tile shower w/ rain showerhead and wand. The massive and private primary bedroom can be found on the upper level, offering a Walk-in closet and 4 pc ensuite w/ a jetted jacuzzi tub/shower. The unspoiled basement is ready for your custom design. This home has a fully -fenced yard, deck, A/C and is situated steps away from the TRAIL-SYSTEM leading to the Whitemud Ravine. Close to shopping, schools, and green space.

Built in 2001

Essential Information

MLS® # E4455262

Price \$599,900



Bedrooms	4
Bathrooms	2.00
Full Baths	2
Square Footage	1,798
Acres	0.00
Year Built	2001
Type	Single Family
Sub-Type	Detached Single Family
Style	Bi-Level
Status	Active

Community Information

Address	618 Layton Court
Area	Edmonton
Subdivision	Leger
City	Edmonton
County	ALBERTA
Province	AB
Postal Code	T6R 2S9

Amenities

Amenities	Air Conditioner, Deck, Hot Water Natural Gas, Vaulted Ceiling, Vinyl Windows
Parking	Double Garage Attached

Interior

Interior Features	ensuite bathroom
Appliances	Air Conditioning-Central, Dishwasher-Built-In, Dryer, Garage Control, Hood Fan, Stove-Electric, Washer, Wine/Beverage Cooler, Refrigerators-Two
Heating	Forced Air-1, Natural Gas
Stories	2
Has Basement	Yes
Basement	Full, Unfinished

Exterior

Exterior	Wood, Vinyl
Exterior Features	Cul-De-Sac, Fenced, Landscaped, Schools
Roof	Asphalt Shingles

Construction	Wood, Vinyl
Foundation	Concrete Perimeter

Additional Information

Date Listed	August 29th, 2025
Days on Market	6
Zoning	Zone 14

DATA IS DEEMED RELIABLE BUT IS NOT GUARANTEED ACCURATE BY THE REALTORS® ASSOCIATION OF EDMONTON. COPYRIGHT 2025 BY THE REALTORS® ASSOCIATION OF EDMONTON. ALL RIGHTS RESERVED.Trademarks are owned or controlled by the Canadian Real Estate Association (CREA) and identify real estate professionals who are members of CREA (REALTOR®, REALTORS®) and/or the quality of services they provide (MLS®, Multiple Listing Service®)

Listing information last updated on September 4th, 2025 at 12:03pm MDT