

# \$159,900 - 4 9650 82 Avenue, Edmonton

MLS® #E4459285

**\$159,900**

2 Bedroom, 0.50 Bathroom, 611 sqft  
Condo / Townhouse on 0.00 Acres

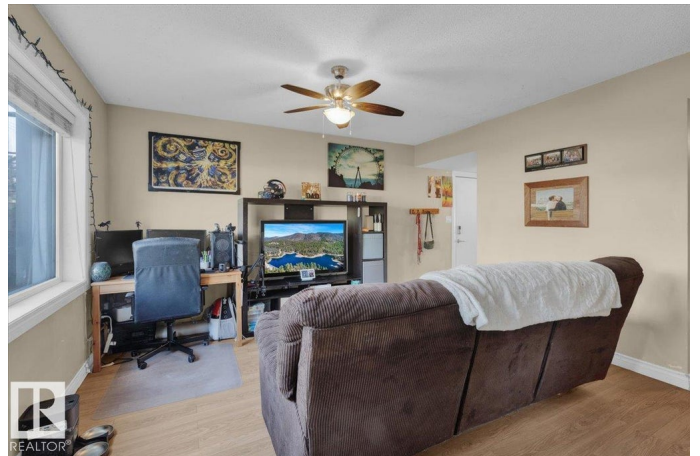
Strathcona, Edmonton, AB

Welcome home! Wonderful location in Strathcona Edmonton close to shopping, transit, night life, and easy access to the University of Alberta and Downtown! Easy access to Edmonton's scenic river valley. Terrific 2 bedroom 1 bathroom floor plan with above ground parking. Well maintained condo and building. Right on 82 Ave. Entrance way leads to large living space and dining area. Walk in kitchen with all appliances included. Oversized windows letting in plenty of natural lighting for this ground floor unit. Full bathroom with tub. Large bedrooms as well. Building has awesome spacious laundry room. Safe and convenient location. Works great as a place to call home or investment property.

Built in 1950

## Essential Information

MLS® #	E4459285
Price	\$159,900
Bedrooms	2
Bathrooms	0.50
Half Baths	1
Square Footage	611
Acres	0.00
Year Built	1950
Type	Condo / Townhouse



Sub-Type	Lowrise Apartment
Style	Single Level Apartment
Status	Active

### Community Information

Address	4 9650 82 Avenue
Area	Edmonton
Subdivision	Strathcona
City	Edmonton
County	ALBERTA
Province	AB
Postal Code	T6C 1A1

### Amenities

Amenities	See Remarks
Parking Spaces	1
Parking	Stall

### Interior

Appliances	Dishwasher-Built-In, Microwave Hood Fan, Refrigerator, Stove-Electric
Heating	Forced Air-1, Natural Gas
# of Stories	3
Stories	1
Has Basement	Yes
Basement	None, No Basement

### Exterior

Exterior	Wood, Stone, Vinyl
Exterior Features	Playground Nearby, Public Transportation, Schools, Shopping Nearby, See Remarks
Roof	Flat
Construction	Wood, Stone, Vinyl
Foundation	Concrete Perimeter

### Additional Information

Date Listed	September 24th, 2025
Days on Market	42
Zoning	Zone 15
Condo Fee	\$369

DATA IS DEEMED RELIABLE BUT IS NOT GUARANTEED ACCURATE BY THE REALTORS® ASSOCIATION OF EDMONTON. COPYRIGHT 2025 BY THE REALTORS® ASSOCIATION OF EDMONTON. ALL RIGHTS RESERVED. Trademarks are owned or controlled by the Canadian Real Estate Association (CREA) and identify real estate professionals who are members of CREA (REALTOR®, REALTORS®) and/or the quality of services they provide (MLS®, Multiple Listing Service®)

Listing information last updated on November 5th, 2025 at 4:02am MST